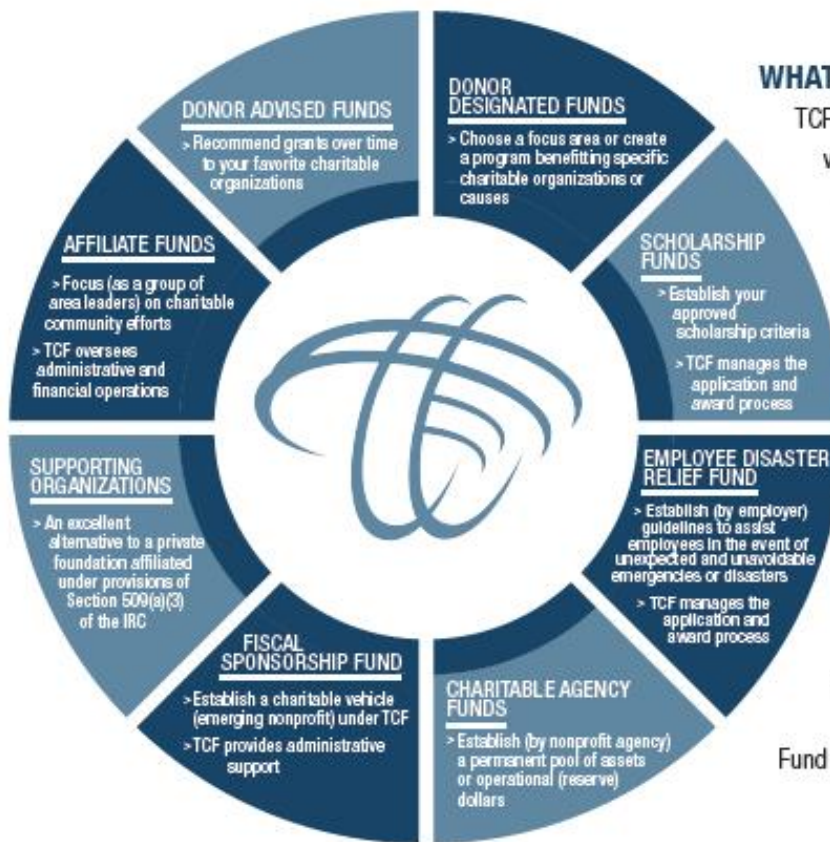




# 2017 ANNUAL REPORT



In 1998, Tulsa Community Foundation (TCF) was established to assist nonprofit agencies, corporations, individuals and families with flexible charitable giving solutions.



## WHAT DOES TCF DO?

TCF is a collection of over 1,300 funds, varying in size from a few thousand to multiple millions of dollars.

Each fund has its own identity and philanthropic purpose and benefits from being invested with other funds to create a lasting community resource.

TCF provides services to individuals, businesses, community groups and nonprofit organizations to deliver easy, low-cost philanthropic solutions to benefit the community.

Fund contributions are tax-deductible.



# TCF FUND AND PROGRAM HIGHLIGHTS

## SUPPLIED FOR SUCCESS | Collaborating Resources

Since 1997, Supplied for Success (SFS) has provided free educational supplies to every student in Tulsa Public and Union Public elementary schools where at least 75% of the students are eligible for the Free or Reduced Price Lunch programs. TCF administers this program through a collaborative effort with Tulsa Public Schools, Union Public Schools, the Charles and Lynn Schusterman Family Foundation, George Kaiser Family Foundation and many other generous donors. SFS ensures that children walk into school each fall with the materials they need to succeed and that economic inequality does not lead to inequality within the classroom.



In the 2016-2017 academic year, SFS provided free school supply kits to over 25,000 students at 53 elementary school sites. TCF is proud to be involved in SFS, helping Tulsa's youngest citizens have all the proper and necessary tools to succeed in the classroom and in life.

## DAVID AND MAX CAMERON FUND/CAMERON CLASSIC | Celebrating Legacies

David and Max Cameron (Father and Son) were unique and amazing people with many excellent qualities: they kept all entertained with an incredible sense of humor, they enjoyed being involved in projects bigger than themselves, they cherished their diverse circle of friends, and they placed the highest importance on family.

In 2012, friends and family of David and Max Cameron established the David and Max Cameron Fund by opening a Donor Designated Fund at TCF to celebrate their legacies and to give back to the community. Each year, friends and family host the Cameron Classic, an annual fundraising golf tournament in which the proceeds benefit the David and Max Cameron Fund. These dollars are then granted to The First Tee of Tulsa, a nonprofit organization that teaches life skills and character development to youth participants at no cost through the game of golf, the sport that David and Max both loved so much. Since the first year of the Cameron Classic, approximately \$50,000 has been granted to The First Tee of Tulsa in memory of David and Max Cameron.



## PAWHUSKA COMMUNITY FOUNDATION | Promoting Communities

In 2009, Pawhuska Community Foundation (PCF) became an affiliate of TCF. This partnership has allowed PCF, which was originally established in 1993, to invest more of its resources back into the community and spend less on its administrative and operational costs. TCF assumes the investment management and administrative functions and PCF is able to focus on providing support, programs and projects for the Pawhuska community.

Since it was established, PCF has been hard at work pursuing this mission through local community projects like the Ben Johnson Memorial Project, National Indian Taco Championship and Skate Board Park. Currently, PCF leads a competitive grants program for nonprofits serving the Pawhuska community. In 2017, it awarded \$25,000 in grants to the following organizations: Osage Ballet, Osage Nation Foundation, Pawhuska Hospital Foundation, Pawhuska Public Schools Foundation and Preserving Arts in the Osage.

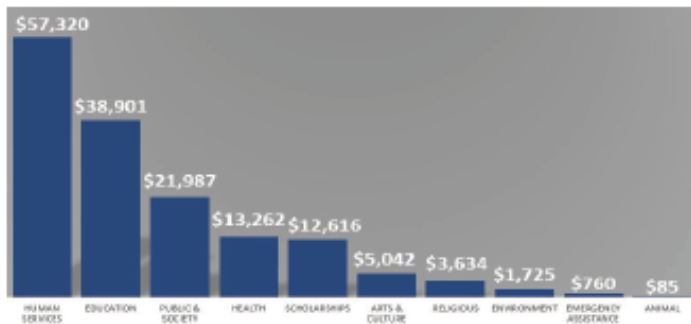


Pawhuska Community Foundation



# FINANCIAL SUMMARY

## GRANTS MADE 2016: \$150,332,000 (GRAPH IN THOUSANDS)



## STATEMENT OF FINANCIAL POSITION

(As of December 31, 2016 and 2015, in thousands)

ASSETS	FY 2016	FY 2015
Cash and investments	\$3,873,120	\$4,164,089
Receivables and other assets	262,382	231,319
<b>TOTAL ASSETS</b>	<b>\$4,135,502</b>	<b>\$4,415,408</b>
Liabilities	\$356,747	\$790,973
Net Assets -		
Unrestricted	3,670,361	3,515,208
Restricted	108,394	109,227
	3,778,755	3,624,435
<b>TOTAL LIABILITIES AND NET ASSETS</b>	<b>\$4,135,502</b>	<b>\$4,415,408</b>

## STATEMENT OF ACTIVITIES

(For Years Ended December 31, 2016 and 2015, in thousands)

REVENUE	FY 2016	FY 2015
Contributions	\$153,042	\$175,181
Investment gains (losses)	198,239	(226,614)
<b>TOTAL REVENUES</b>	<b>351,281</b>	<b>(51,433)</b>
EXPENSES		
Grant services	155,332	250,990
Investment services and other	30,043	22,913
General and administrative	11,148	10,438
Fundraising	438	376
<b>TOTAL EXPENSES</b>	<b>196,961</b>	<b>284,717</b>
<b>TOTAL INCREASE (DECREASE) IN NET ASSETS</b>	<b>154,320</b>	<b>(336,150)</b>
<b>NET ASSETS, BEGINNING OF YEAR</b>	<b>3,624,435</b>	<b>3,960,585</b>
<b>NET ASSETS, END OF YEAR</b>	<b>\$3,778,755</b>	<b>\$3,624,435</b>

## CONTACT INFORMATION

TCF staff is dedicated to maintaining the charitable efforts of its funds and working with those who are interested in new charitable initiatives. We collaborate with individuals, families and companies to simplify charitable giving, identify important community services, and administer charitable programs. To find out more about TCF, visit [www.tulsacf.org](http://www.tulsacf.org). To set up a meeting with our staff, please contact our offices at (918) 494-8823.



## 2017 BOARD OF TRUSTEES

**Jerry Dickman**  
Chapman Foundations Management  
(Chairperson of the Board)

**Fred Dorwart**  
Frederic Dorwart Lawyers  
(Secretary/Treasurer)

**Peter Adamson III**  
Autumn Glory Partners, LLC

**Jim Adelson**  
Nadel & Gussman Energy, LLC

**Phil Albert**  
Palco Structural, LLC

**Alison Anthony**  
Tulsa Area United Way

**Steve Bradshaw**  
Bank of Oklahoma

**G. T. Bynum**  
City of Tulsa

**Stephanie Cameron**  
OK2Grow

**Katherine G. Coyle**  
Connor & Winters

**Barry Davis**  
Davis, Tuttle Venture Partners

**Stephen Fater**  
QuikTrip Corporation

**Phil Frohlich**  
Prescott Group Capital Management, LLC

**Elizabeth Hagans**  
Madrona Consulting

**Hans Helmerich**  
Helmerich & Payne

**Judy Kishner**  
The Anne and Henry Zarrow Foundation

**Marcia MacLeod**  
Community Volunteer

**Sanjay D. Meshri**  
Advance Research Chemicals, Inc.

**Charles S. Monroe**  
Charles S. Monroe, CPA PC

**Dennis Neill**  
Charles and Lynn Schusterman  
Family Foundation

**Pierce Norton**  
ONE Gas

**Julius Pegues**  
John Hope Franklin Center

**E. C. Kip Richards**  
Core Associates, LLC

**Meredith Siegfried**  
NORDAM Group, Inc.

**Stuart Solomon**  
AEP/PSO